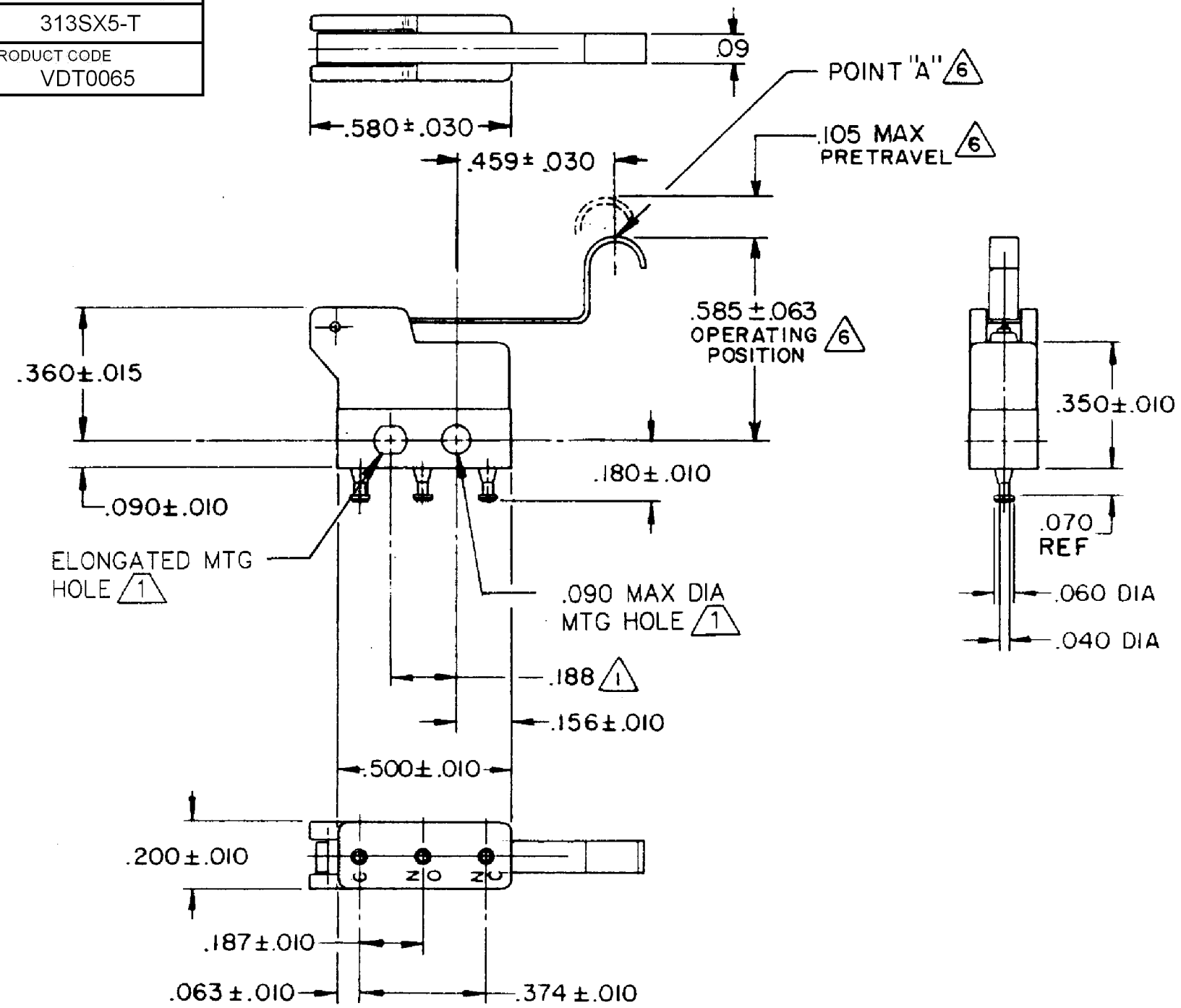


HONEYWELL PART NUMBER
313SX5-T
PRODUCT CODE VDT0065

REV	DOCUMENT	CHANGED BY	CHECK
10	0038558	SS 08MAY08	BLR



- NOTES**
- 1 MOUNTING HOLES WILL ACCEPT PINS OR SCREWS OF .087 MAX DIA ON .188 ± .002 CENTERS
 - 2 - TERMINALS ARE SOLDER DIPPED WITH RoHS-COMPLIANT TIN/COPPER/SILVER SOLDER.
 - 3 - SWITCH WILL WITHSTAND TEMPERATURE OF 250° F
 - 4 - MOVABLE CONTACT MATERIAL-24 K SOLID GOLD OVERLAY
 - 5 - STATIONARY CONTACT MATERIAL - GOLD ALLOY
 - 6 - CHARACTERISTICS ARE TAKEN AT POINT "A"

RELEASE NO.	PR-2877
REPLACES	

CHARACTERISTICS (triangle 6)
OPERATING FORCE ----- 30 GRAMS MAX
RELEASE FORCE ----- 5 GRAMS MIN
DIFFERENTIAL TRAVEL ---- .035 MAX
OVERTRAVEL ----- .022 MIN

ELECTRICAL DATA	
CONTACT ARRANGEMENT SPDT	
30 VOLTS DC RATING	
	SEA LEVEL 50,000 FT
INDUCTIVE	0.5 AMP 0.5 AMP
RESISTIVE	1 AMP 1 AMP
MAXIMUM INRUSH 2 AMP	
APPROVALS	KEMA, CE 1A 250 V - T125 25E3
	UL, CSA 1A 125 VAC BRAND L22J

DESIGN UNITS: INCH
TOLERANCES UNLESS NOTED:
NO PLACE X ±
ONE PLACE .X ±
TWO PLACE .XX ±
THREE PLACE .XXX ±
FOUR PLACE .XXXX ±
ANGLES ±
THIRD ANGLE PROJECTION

DRAWN	SPK	27FEB08
CHECK	RJ	27FEB08
THIS DRAWING COVERS A PROPRIETARY ITEM AND IS THE PROPERTY OF HONEYWELL. THIS DRAWING IS NOT TO BE COPIED OR USED WITHOUT THE PERMISSION OF HONEYWELL.		
INTERPRET PER ANSI Y14.5M-1982 OTHER HONEYWELL ENGINEERING STANDARDS MAY APPLY		
RASTER		

Honeywell			
TITLE SWITCH - BASIC			
SIZE	TYPE	DRAWING NAME	REV
B	I	313SX5-T	10
SCALE	WEIGHT:	SHEET 1 OF 1	